

|                               |               |
|-------------------------------|---------------|
| <b>Facades available:</b>     |               |
| Lachlan, Barrington, Flinders |               |
| Cooper, Nepean                |               |
| <b>Overall home width</b>     | <b>14.87m</b> |
| <b>Overall home length</b>    | <b>22.31m</b> |

|              |                           |               |
|--------------|---------------------------|---------------|
| Residence    | 226.5m <sup>2</sup>       | 24.4sq        |
| Garage       | 36m <sup>2</sup>          | 3.9sq         |
| Porch        | 4.4m <sup>2</sup>         | 0.5sq         |
| Alfresco     | 14.2m <sup>2</sup>        | 1.5sq         |
| <b>Total</b> | <b>281.1m<sup>2</sup></b> | <b>30.3sq</b> |

**FLOORPLAN OPTIONS**

We personalise our floorplans. Talk to us about our huge range of ready-to-go design options.

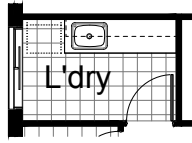
Listed details based on Lachlan facade floorplan (illustrated)

\*Copyright conditions. All photos and illustrations are representative only. Floor plans and specifications may be varied by Burbank without notice, the dimensions are diagrammatic only and a Building Contract with final drawings will display correct dimensions and detail. All designs are the property of Burbank and must not be used, reproduced, copied or varied, wholly or in part without written permission from an authorised Burbank representative. Copyright Burbank Australia (NSW) Pty Ltd. ABN 88 610 822 770. NSW BL 295627C ACT BL 2016566.

**Call 13 BURBANK**  
**Visit burbank.com.au**

**OPTION LD1**

Provide Laundry upgrade with additional 2no. 800mm base cupboards, 1no. 300mm base cupboard, 2no. 800mm overhead cupboards, 1no. 300mm overhead cupboard with additional tiled splash back and bench top to suit.



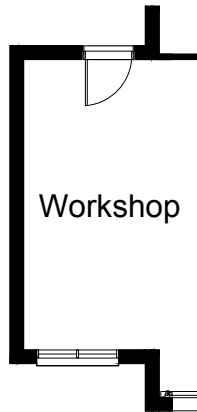
**OPTION G1**

Provide extension to Garage to Store create additional Storage area and relocate hinged door to suit. Increases area by 6.46m<sup>2</sup>. Increases width by 1200mm.



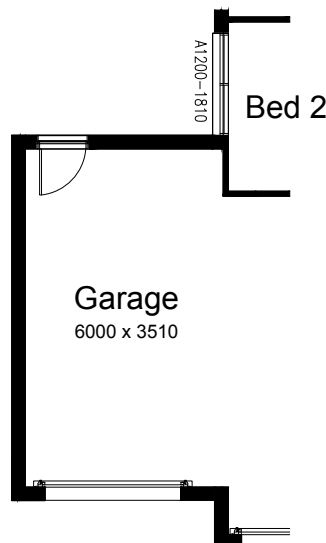
**OPTION G2**

Provide extension to Garage to create Workshop area including additional window to suit and relocate hinged door to suit. Increases width by 2400mm. Increases area by 13.51m<sup>2</sup>.



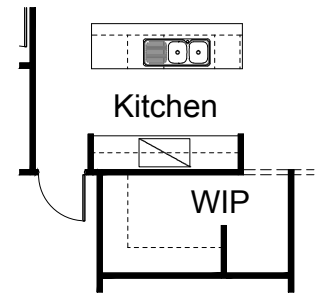
**OPTION G3**

Provide triple car Garage including additional Panel lift door to front and relocate hinged door and Bedroom 2 window to suit. Increases area by 23.29m<sup>2</sup>. Increases width by 3600mm.



**OPTION IP1**

Provide WIP Option by deleting Cloak and extending walk in pantry shelving. relocate refrigerator space into walk in pantry and relocate Garage access door from Kitchen in lieu of Cloak.



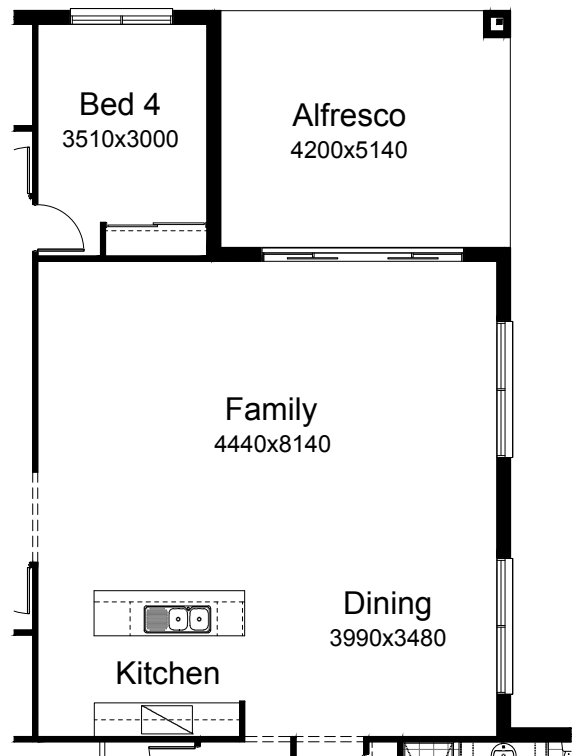
**OPTION IP2**

Provide 1no. 2110mm x 3575mm aluminium bi-parting door to Alfresco in lieu of standard.



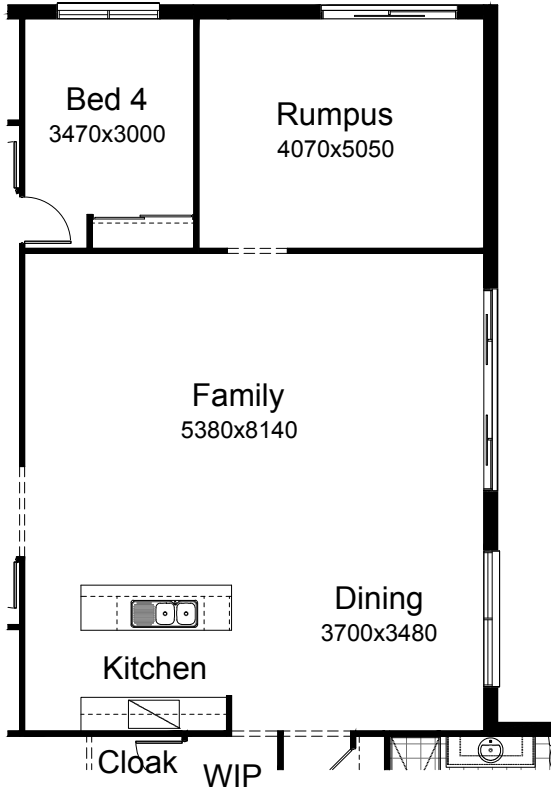
**OPTION EP1**

Provide Alfresco Option with 1no. 470mm x 470mm brick pier in lieu of Rumpus and relocate Alfresco and extend Family room to suit. Provide 1no. 2100mm x 3575mm aluminium bi-parting door to Alfresco and 1no. 514mm x 2410mm aluminium sliding window to family.



**OPTION EP2**

Extend Family area by deleting Outdoor living and provide 1no. 2100mm x 3575mm aluminium bi-parting sliding door in lieu of standard.



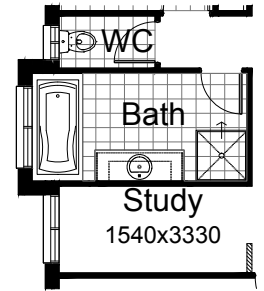
**OPTION EP3**

Provide additional Alfresco to rear of Rumpus with tiled hip roof, structural concrete floor, light point and 2no. 470mm x 470mm brick piers. Increases area by 16.81m<sup>2</sup>. Increase length by 3120mm.



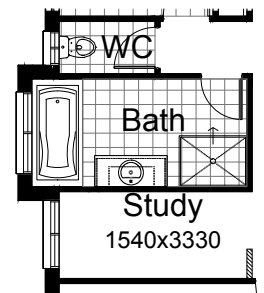
**OPTION B1**

Provide Bathroom Option by extending Bathroom width by 450mm to under eave and decrease Study length by 60mm and extend WC length by 10mm to suit. Provide additional 1no. 1582mm wide vanity unit in lieu of standard. Increases area by 1.15m<sup>2</sup>. Increase width by 450mm.



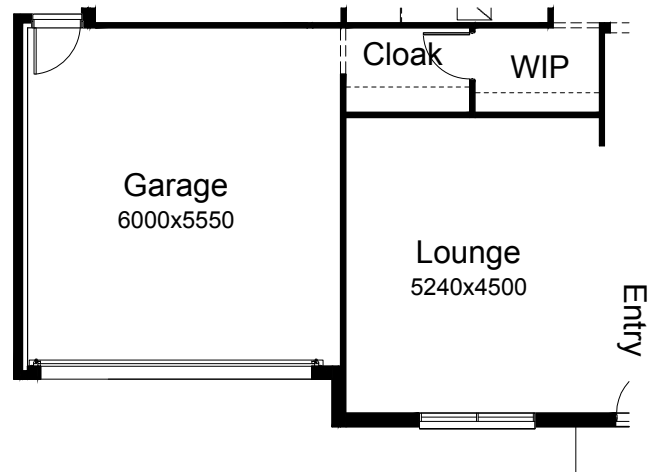
**OPTION B2**

Provide Bath option with 1no. 900mm x 1200mm tiled shower base in lieu of standard and 1no. 1282mm wide vanity basin to suit. Note: This Option to be used with Option IP4.



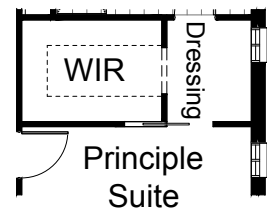
**OPTION G4**

Provide Lounge Option by extending Lounge width by 1200mm to 5240mm x 4500mm in lieu of standard and relocate Lounge window and Garage to suit. Increases area by 8.64m<sup>2</sup>. Increase width by 1200mm.



**OPTION IP3**

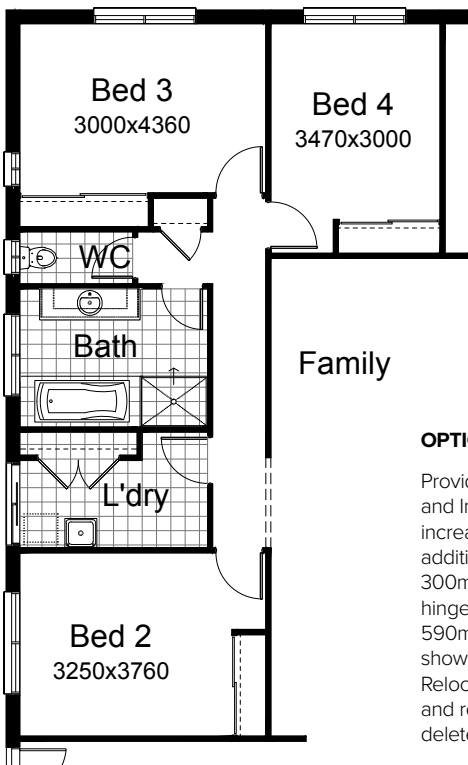
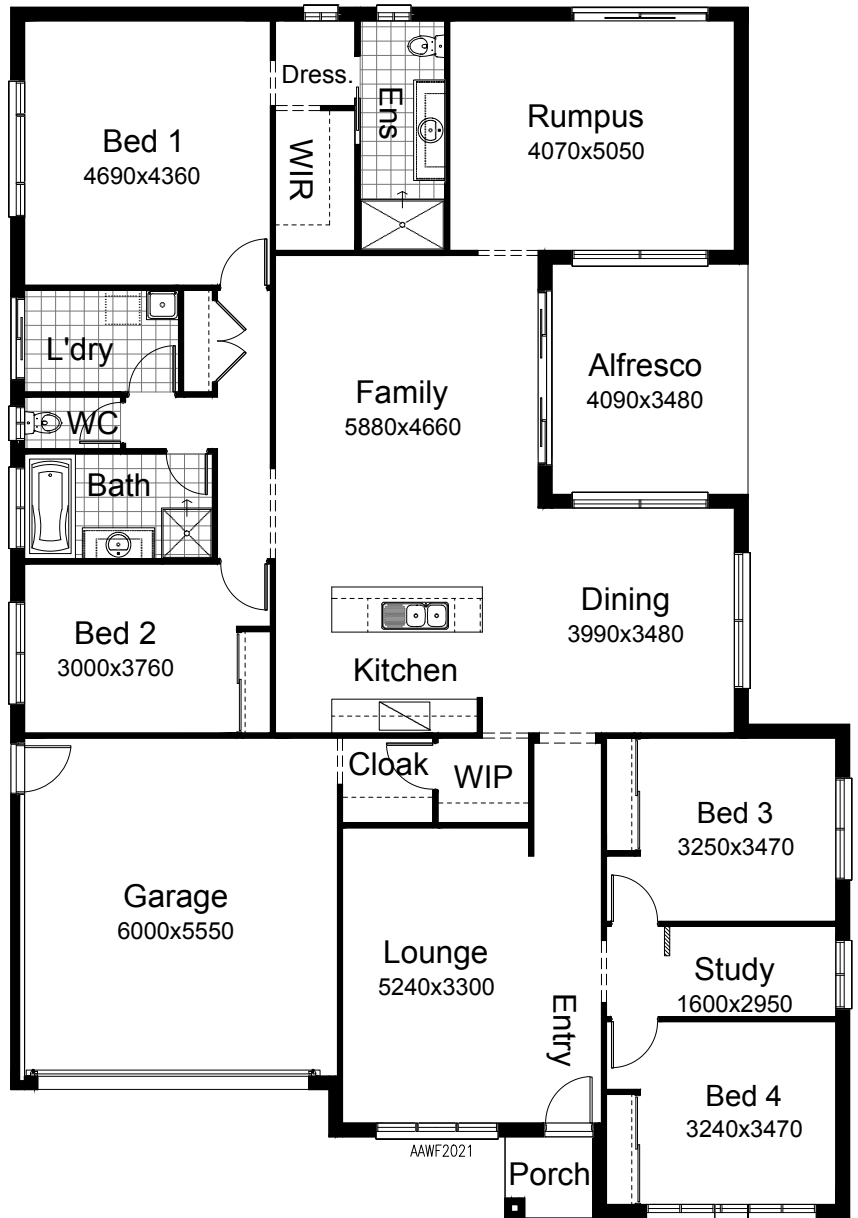
Provide 1no. 820mm cavity sliding door to Principle Suite/Dressing.



**OPTION IP4**

Relocate Bed 1/Ensuite and WIR with Bedroom 3, Bedroom 4 and Study. Provide additional 1no. 1782mm wide vanity unit basin in lieu of standard, 1no. 770mm cavity sliding door to Dressing/Ensuite and delete Linen cupboard to Entry Passage to suit.

Note: Not available with Nepean, Barrington & Greendale facades due to window placement.

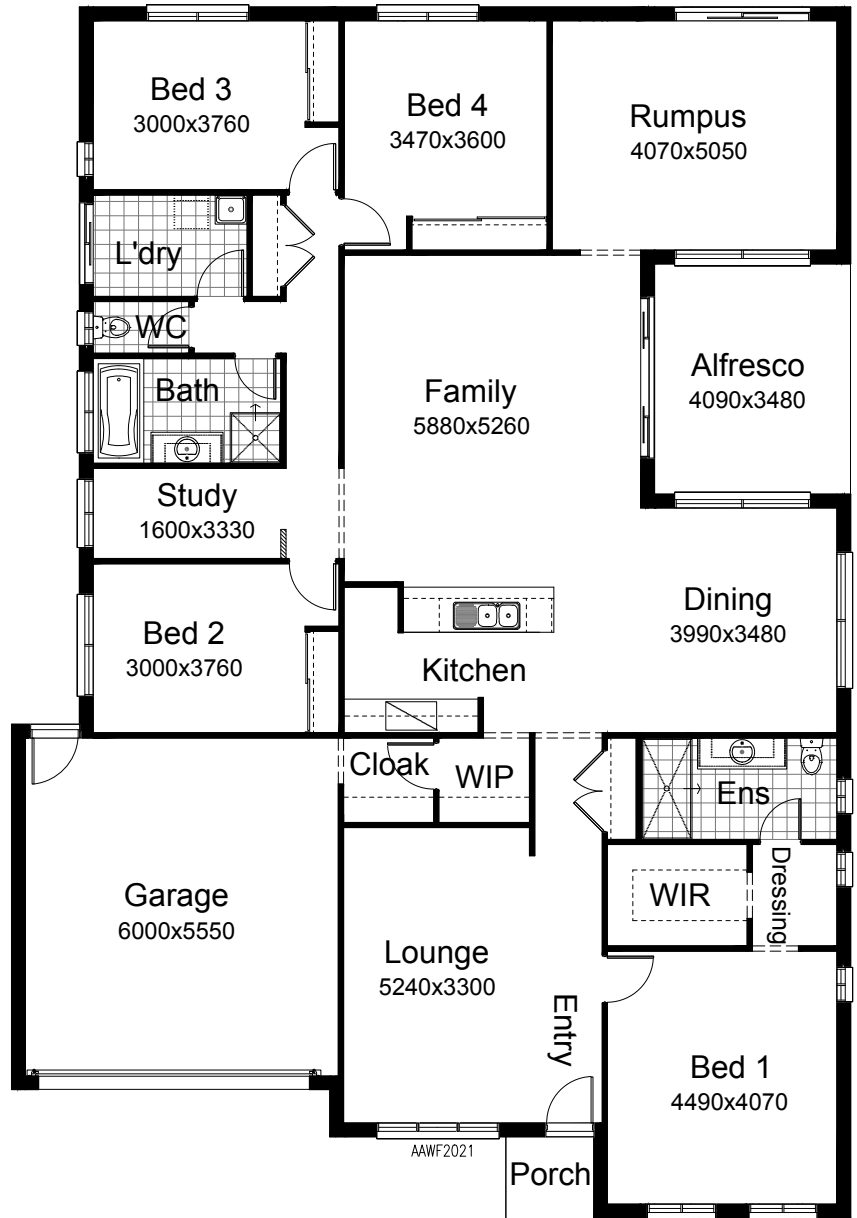


**OPTION IP5**

Provide Internal plan change by deleting Study and Increase Bedroom 2 length by 250mm, increase Laundry length by 250mm and provide additional site built Linen cupboard with 4no. 300mm deep shelves and 2no. 720mm flush panel hinged doors. Increase Bathroom length by 590mm and provide 1no. 900mm x 1200mm tiled shower base and 1no. 1782mm wide vanity unit. Relocate Bedroom 3 robe and Linen cupboard and reduce Linen cupboard width by 840mm and delete 1no. 720mm flush panel hinged door to suit.

**OPTION EP4**

Relocate front section of house (Bed 1/Ensuite and WIR, Entry, Lounge, WIP, Cloak and Garage) 1200mm to create setback to Bed 2/Bed 3 external wall. Relocate Kitchen cupboards and opening to WIP to suit. Provide plastered refrigerator alcove adjacent island bench in lieu of standard refrigerator location. Align Rumpus/Outdoor Living/Dining wall with Principle Suite by increasing width of Bed 4, Family and Dining by 600mm. Provide 2No. 700mm base cabinets to kitchen in lieu of 2No. 800mm. Area increases by 7.63m<sup>2</sup> to 286.64m<sup>2</sup> total.



**OPTION LD2**

Provide Laundry upgrade with laminated insert trough, 2no. 800mm base cupboards, 1no. 450mm base cupboard, 2no. 800mm overhead cupboards, 1no. 450mm overhead cupboard, 1no. 400mm laminated Broom cupboard with additional tiled splash back and bench top to suit.

